

## **Final Pre-electional Somaliland Poll Strongly Projects UDUB Party Winning by 54.5% of the Vote.**

The final Polls before the Somaliland Presidential Election - By Somaliland Public Policy Independent researchers Idris .A. Farah (Gaas) and M.A Shine are Research unit and Directors.

While none of the contesting parties has conducted scientific and credible polls regarding Somaliland voter's attitudes and preferences showing strong correlation between party campaigns and the actual wining of votes, they all have made strong forecasting about their prospects for victory. It's not unusual for Somaliland political parties to claim victories that are contrary to the polls that have been conducted by independent observers. Nevertheless, based on our observations neither Kulmiye nor UCID has shown any capability for capturing the highest office in the land. Most independent political analysts we talk to believe that the fledging opposition parties lack the capacity to run effective campaigns to dislodge the entrenched UDUB party.

Our study explores the voting behavior among social groups specifically gender, age, labor skill and the unemployed, the relationship between those groups and the 2010 election voting behavior by using the descriptive statistic analysis. It look closely at the impact of these social forces have on this contest by comparing it to the previous election to point at the differences between the three elections.

Hypothetically, the impact of party identification, gender, and regional voting defenses on the 2010 Somaliland presidential election are bigger than collision of clan, gender and regional voting disparity on previous elections which people were divided severely by the clan - region split rather than ideology or party loyalty.

Theoretically, the social, psychological, rational choice and mobilization theories can analyze this selection very well because people are voting in this time as a group; they have very strong loyalty to their party, and region. As our study projects civic groups mainly from ordinary people, such as families, associations, business people and young voters are giving their votes to Rayale while very young people, civil war veterans, the less educated, an unskilled labor force and the unemployed are mainly voting for Silanyo.

In contrast, both business people and civil society voters are going to support the success of this election. The care about the outcome of the Somaliland presidential election because as indicated by our observation they think that president Rayale is for peace, stability, development and motivated by UDUB's progressive policy .

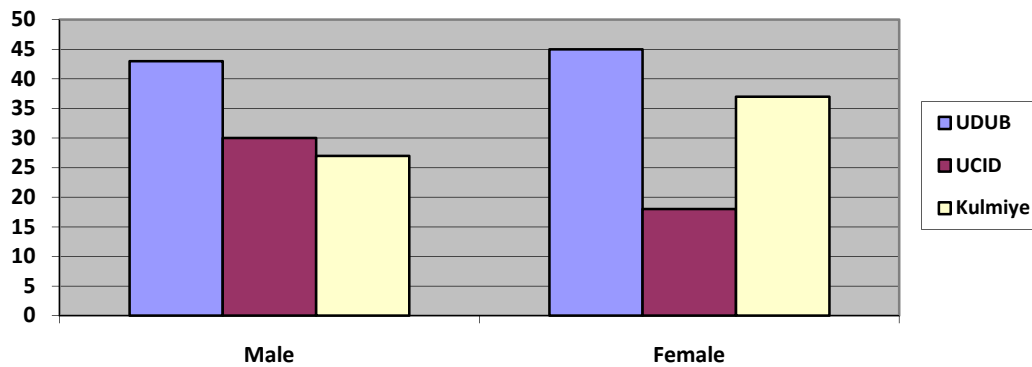
Even though, the presidential campaign has just ended and regions are different in their political preferences, people are inspired by party identification and campaign organizer. At the same times all the candidates are getting their biggest support mainly from their respective party loyalty and geographic location rather than tribal lineage compared to 2003 election where the presidential hopefuls were getting their support mainly from their tribe.

Political deference between parties is always sharps in Somaliland presidential race, but the 2010 presidential election is quite different from 2003 in terms of clan based voting. In 2003, according to a survey done by Somaliland election focus group 78% of each clan supported their candidate without building coalition with another tribe. However, in 2010 people are apparently voting through their party's ticket.

Gender differences in voting behavior were not so strong in Somaliland, but in 2010 presidential election it becomes stronger because more than 45% of women are going to vote for Udub where as 24% of women are going to vote for Ucid and 32% for Kulmiye. As the gender politics begin to emerge in Somaliland, some feminist think that there is room

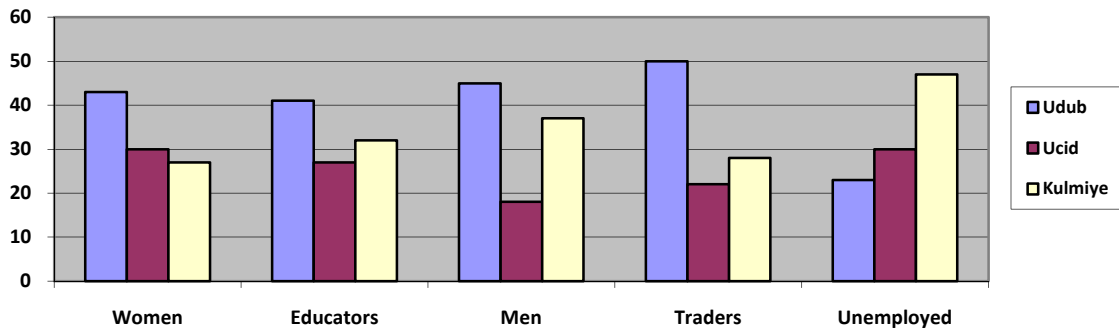
for Somaliland women in politics and are hoping that women would participate effectively in the Somaliland democratic process.

	<b>Male</b>	<b>Female</b>	<b>total</b>
<b>UDUB</b>	43	45	44%
<b>UCID</b>	30	18	24%
<b>Kulmiye</b>	27	37	32%

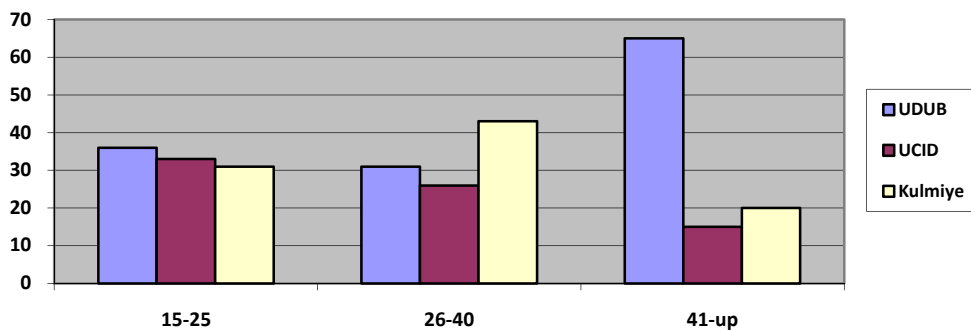


This study tests the relationship between party Affiliation and, education, gender, age and regional voting disparity in Somaliland presidential election. Our quantitative attribute is age, gender, region and education while our qualitative attribute is partisan voting behavior.

	<b>Women</b>	<b>Educators</b>	<b>Men</b>	<b>Traders</b>	<b>Unemployed</b>
<b>Udub</b>	43	41	45	50	23
<b>Ucid</b>	30	27	18	22	30
<b>Kulmiye</b>	27	32	37	28	47



	15-25	26-40	41-up	total
<b>UDUB</b>	36	31	65	44%
<b>UCID</b>	33	26	15	24.60%
<b>Kulmiye</b>	31	43	20	31.33%

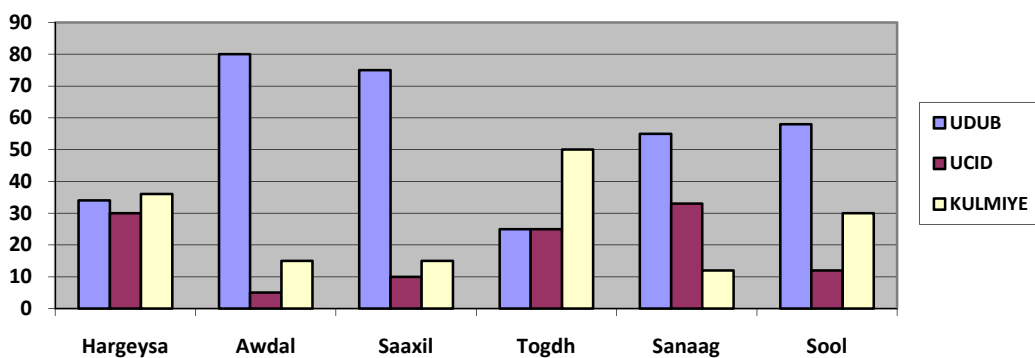


The result suggests that party identification, gender and another social characteristic such as education and regional gap in voting are a matter in this election. As the above data shows, UDUB gets the strongest party identification compared to its rivals and it will be Somaliland' voter's first choice while both KULMIYE and UCID are second and third positions.

All parties are same population according to our quantitative measurement because our assumption significant is bigger than .0611 which shows that three groups are not different with regard to the quantitative measurement. All parties which we measured come from the same population in terms of interference to the population because our "Significant level is .0611 and they are not different in terms of "Sig" and the means that means they come from is the same population.

The correlation between party voting and education, age, and gender is positive and strong

	<b>Hargeysa</b>	<b>Awdal</b>	<b>Saaxil</b>	<b>Togdh</b>	<b>Sanaag</b>	<b>Sool</b>
<b>UDUB</b>	34	80	75	25	55	58
<b>UCID</b>	30	5	10	25	33	12
<b>KULMIYE</b>	36	15	15	50	12	30



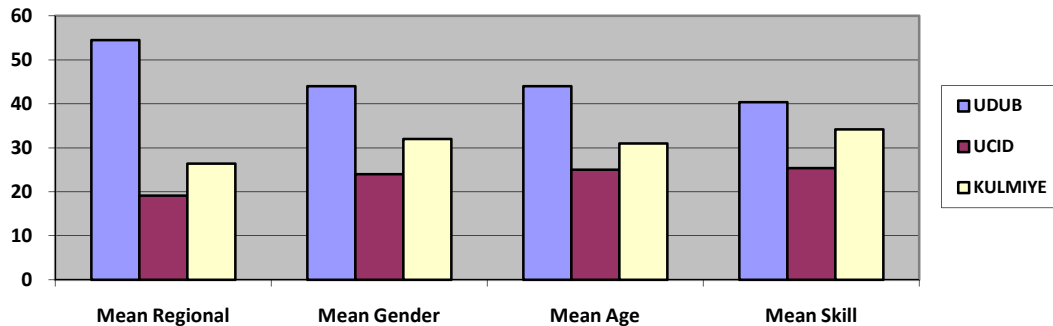
The study strongly shows that nearly above half of the Somaliland major cities identifies as either strongly prefer Rayale/Yasin ticket or have solidly Udub party loyalty which means voting for president Rayale such as Borama , Lasaanood, Erigavo, berbera and Gabiley, Oodwene all have Udub identification advantage of double digit points or more, and all chose president Rayale over Silanyo. While Burco, Yirowe, Aynabo and have solidly Kulmiye party identification.

The study predicts that this time around Somaliland election outcome will depend on party support, strong turnout among party loyalists and each party’s get out the vote campaign. The study concludes that president Rayale is the front runner in this election, but the chance that he has for victory depends up the turn out of his supporters.

#### Overall average results

	Mean Regional	Mean Gender	Mean Age	Mean Skill

UDUB	54.5	44	44	40.4
UCID	19.1	24	25	25.4
KULMIYE	26.4	32	31	34.2



As our observations from these six Somaliland Regions show, UDUB party is by far ahead of the combined Kulmiye and UCID party campaigns. 1,650 respondents from six Somaliland regions took part to a detailed questionnaire we sent to them; this survey poll with a margin of error of plus or minus 4% shows UDUB Party 44%, Kulmiye party 32% and UCID party 24% respectively. Party identification, gender and disparity in regional voting pattern will be determining the outcome of Somaliland 2010 presidential.

Idriss A. Farah (Gaas)

Email: zeilici1@yahoo.com

Mohamed M. Abdilahi (Shine)

Email: cawale36@gmail.com>